

特點 Feature

- 1、管接式調壓閥，適用於通用型的氣動應用。
 - 2、放氣式為標準型。
 - 3、非提升式調節旋鈕有快動鎖緊。
 - 4、選用包括非放氣型和其他彈範圍。
1. Tube-join type regulator, apply to the current pneumatic application.
 2. Deflation style is standard.
 3. Non-upgrade style regulated knob with swift power locking.
 4. Choice including non-deflation type and other spring scope.

規格 Specification

型號 Model	NAR	R07-200RNMG
使用壓力範圍 Operating Pressure Range	0.3-7	
進氣壓力 Inlet Pressure	0.15MPa ~ 1.00MPa	
使用溫度範圍 Operating Temperature Range	-20°C ~ 65°C (R07)	-20°C ~ 80°C (R11)
接管口徑 Port Size	G1/8"	G1/4"
流量 Flow	7.5(dm³/s)	
工作方式 Working Type	放氣 Deflation	
工作介質 Working Medium	壓縮空氣 Compressed Air	

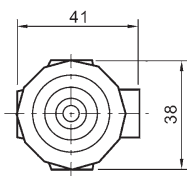
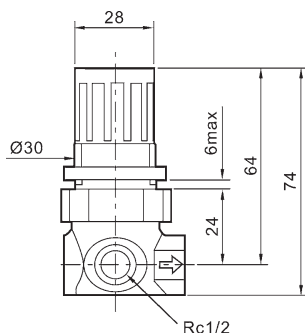
* 小型 07 系列部件；↑ 進氣壓力 10BAR、出氣壓力 6.3BAR、壓力降 1BAR 時的最大流量。# 可調至 0 巴出氣壓力，而一般調至超出規定的壓力。

* Minitype 07 series parts; ↑ Inlet pressure 10 bar ,outlet pressure 6.3 bar ,the maximum flux of falling 1bar the pressure.

The outlet pressure could be regulated to 0 bar , but usually it is regulated to overtop the stated pressure

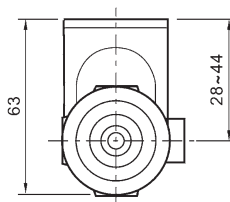
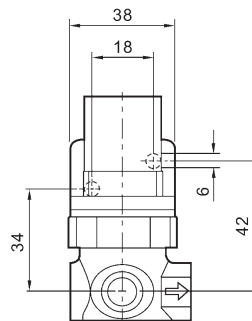
外觀尺寸 Overall Dimension

NAR-200



重量 Weight
0.19Kg

托架安裝 Bracket Setting



其它類型 Other Style

其他壓力範圍 Other pressure Range
調節螺釘 Regulated bolt
非放氣型 Non-deflation style

材料 Material

鋅合金殼體，乙縮醛樹脂調節旋鈕，
選用的鋼質 T 形杆調節螺釘(R11)，
合成橡膠性材料。

Zinc alloy rind , acetol colophony
regulated knob , using steel T
haulm regulated knob (R11) ,
synthetic rubber flexibility material .