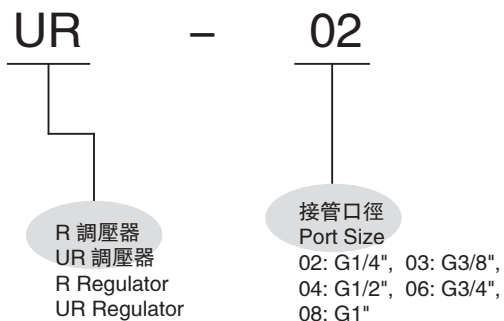




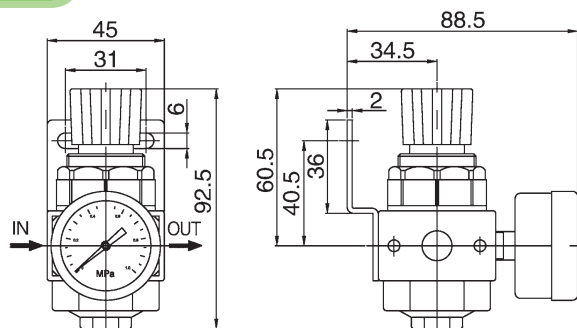
規格 Specification

型號 Type	R-02	UR-02	UR-03	UR-04	UR-06	UR-08
接管口徑 G Port Size	1/4"	1/4"	3/8"	1/2"	3/4"	1"
壓力表接管口徑 G Gauge Thread	1/8"	1/4"				
工作介質 Fluid	壓縮空氣 Compressed Air					
使用壓力範圍 MPa Operating Pressure Range	0.1~0.85					
最大處理流量 L/min Max. Flow Rate	1850	2800		7900	8100	
使用溫度範圍 °C Ambient Temperature	-10~60					
構造 / 減壓閥 Structure	活塞型 Piston Type					

訂購代碼 Ordering Code

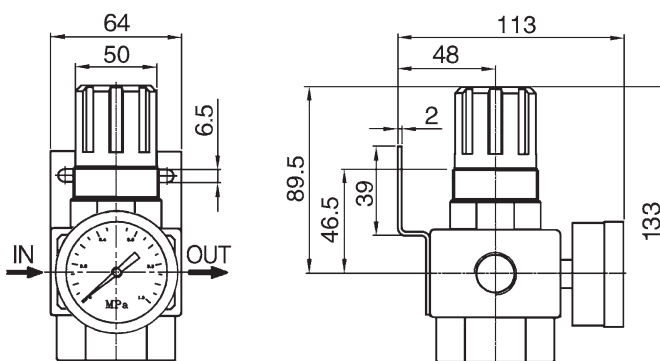


R-02

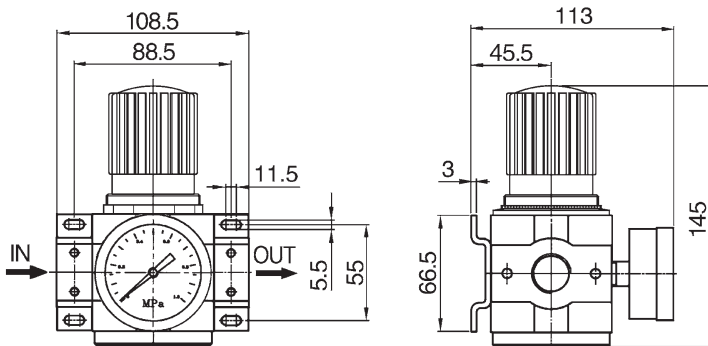


外觀尺寸 Overall Dimension

UR-02、03、04



UR-06、08



調壓器
Regulator
UR